

- 0.5 1 mile
- Non-motorized trail open to hikers & horseback, no bicycles
- ATV trails, also open to motorcycles, mtn. bikes, hikers & horseback
- Forest Service system roads - open to all vehicles, may require 4WD
- County roads - open to all vehicles
- County roads - closed to unlicensed vehicles
- State and federal highways
- End of road
- Boating access; fee sites
- Campground and picnic areas; fee sites
- Trailhead; parking
- Proposed Browns Canyon National Monument Boundary
- USFS, San Isabel National Forest
- BLM, Bureau of Land Management
- Browns Canyon Wilderness Study Area
- Private

Browns Canyon National Monument was declared by President Obama in February of 2015. The area within the monument is characterized by stunning granite rock formations, pinon, ponderosa pine and aspen trees and the area's lifeline - the Arkansas River. Prickly pear cactus, yucca and a fantastic array of arid climate wildflowers are abundant throughout the canyon and sweeping views of the snow-capped 14,000'+ peaks of the Sawatch Range are visible from higher vantage points.



The Sawatch Range from the southern end of the monument

Wildlife is ever-present in the monument - Elk, mule deer, bighorn sheep and a wide variety of birds, including bald eagles, are spotted regularly. Predators such as mountain lions, bobcat, coyote and black bear thrive in the area, but keep a low profile. The Arkansas River through much of the valley, including the monument area, was recently designated as Gold Medal Trout Waters.



Yucca and other desert-like plantlife flourish throughout the monument

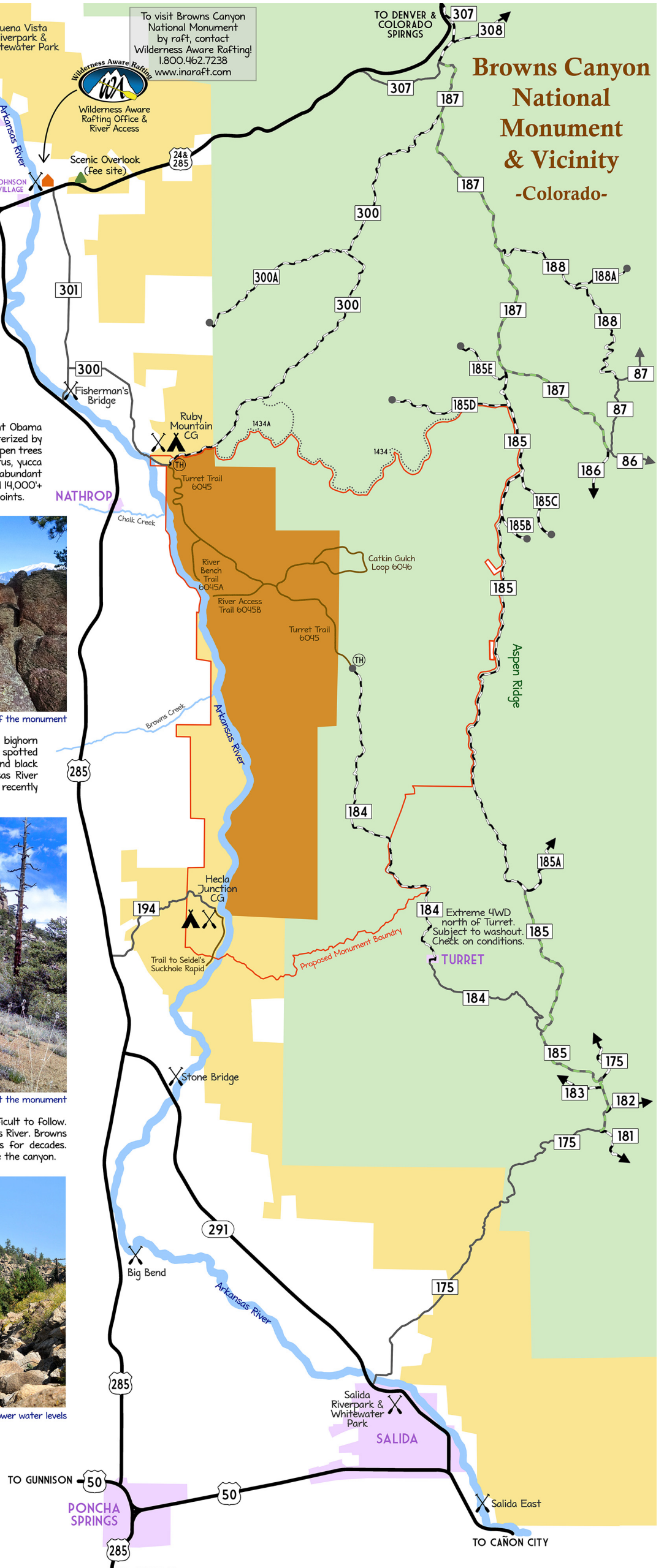
Trails within the monument are long, primitive and often difficult to follow. The best way to see the monument is by raft on the Arkansas River. Browns Canyon contains world-class whitewater admired by boaters for decades. Consider a half or full day raft trip for the easiest way to see the canyon.



Zoom Flume rapid in the heart of Browns Canyon at lower water levels



Crashing through Zoom Flume at high water



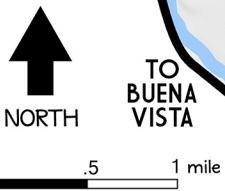
To visit Browns Canyon National Monument by raft, contact Wilderness Aware Rafting! 1.800.462.7238 www.inaraft.com



Wilderness Aware Rafting Office & River Access

Scenic Overlook (fee site)

Browns Canyon National Monument & Vicinity -Colorado-



- Non-motorized trail open to hikers & horseback, no bicycles
- ATV trails, also open to motorcycles, mountain bikes, hikers & horseback
- Forest Service system roads - open to all vehicles, may require 4WD
- County roads - open to all vehicles
- County roads - closed to unlicensed vehicles
- State and federal highways
- End of road

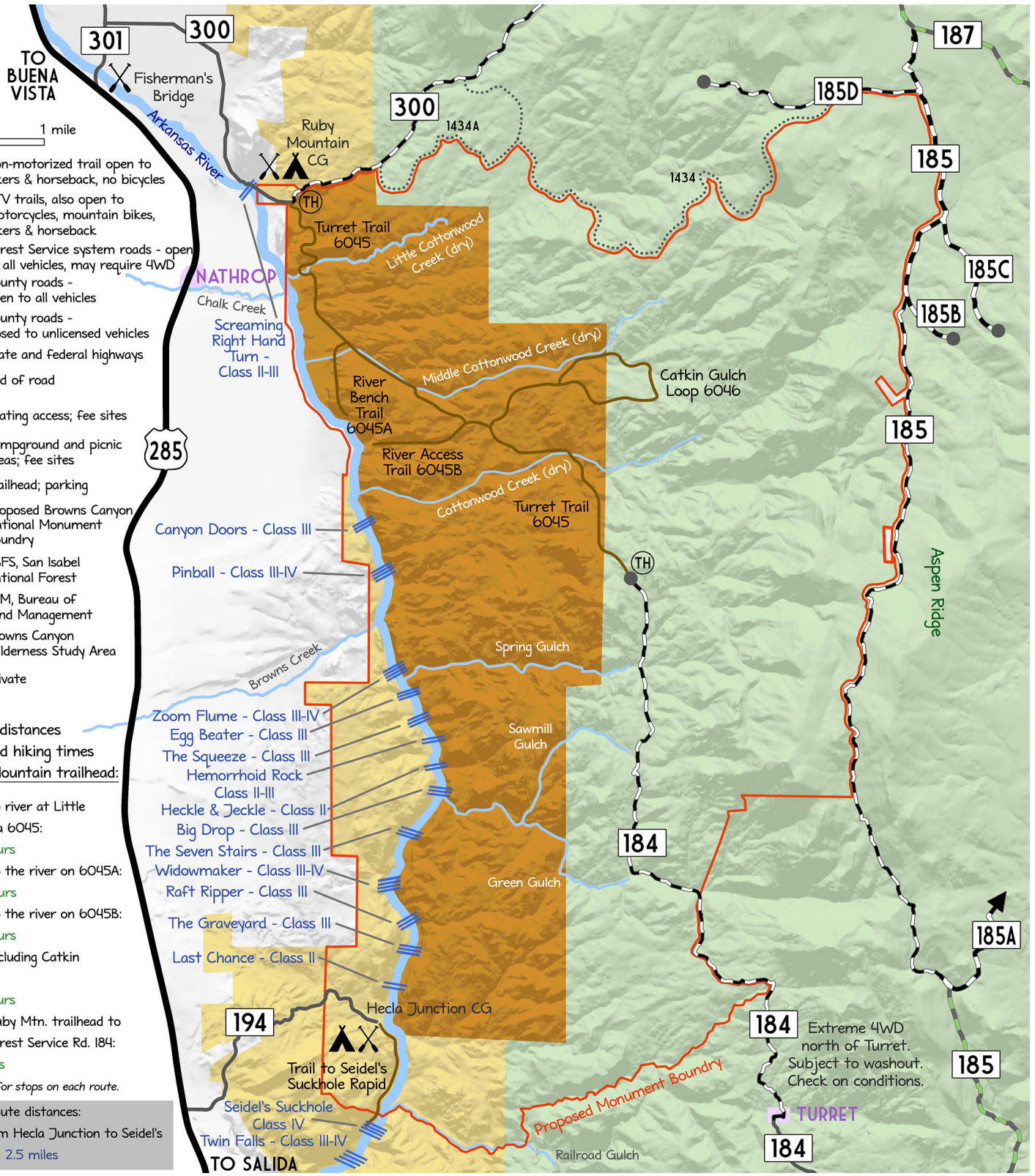
- Boating access; fee sites
- Campground and picnic areas; fee sites
- Trailhead; parking

- Proposed Browns Canyon National Monument Boundary
- USFS, San Isabel National Forest
- BLM, Bureau of Land Management
- Browns Canyon Wilderness Study Area
- Private

Hiking route distances and estimated hiking times from Ruby Mountain trailhead:

- Round trip to river at Little Cottonwood via 6045:
2.7 miles, 2 hours
 - Round trip to the river on 6045A:
5.5 miles, 3 hours
 - Round trip to the river on 6045B:
9 miles, 4.5 hours
 - Round trip including Catkin Gulch Loop:
11.5 miles, 5 hours
 - Round trip Ruby Mtn. trailhead to trailhead at Forest Service Rd. 184:
11 miles, 5 hours
- Add ample time for stops on each route.

Other hiking route distances:
Round trip from Hecla Junction to Seidel's Suckhole Rapid: 2.5 miles



184 Extreme 4WD north of Turret. Subject to washout. Check on conditions.